



碧云天生物技术/Beyotime Biotechnology
 订货热线: 400-1683301 或 800-8283301
 订货 e-mail: order@beyotime.com
 技术咨询: info@beyotime.com
 网址: http://www.beyotime.com

SARS-CoV-2 N Protein Human Monoclonal Antibody (Clone B2)

产品编号	产品名称	包装
AF0503-50 µg	SARS-CoV-2 N Protein Human Monoclonal Antibody (Clone B2)	50 µg
AF0503-200 µg	SARS-CoV-2 N Protein Human Monoclonal Antibody (Clone B2)	200 µg
AF0503-1mg	SARS-CoV-2 N Protein Human Monoclonal Antibody (Clone B2)	1mg

产品简介:

来源	用途	交叉反应性	理论分子量	实际分子量
Human	WB, ELISA	SARS-CoV-2 (2019-nCoV)	48kDa	~48kDa

WB, Western blot; IP, Immunoprecipitation; IF, Immunofluorescence; IHC, Immunohistochemistry; ICC, Immunocytochemistry; FC, Flow Cytometry; ChIP, Chromatin Immunoprecipitation Assay; ChIP-seq, ChIP-sequencing.

H, Human; M, Mouse; R, Rat; C, Chicken; Cw, Cow; Dg, Dog; Gp, Guinea pig; Hm, Hamster; Hr, Horse; Mk, Monkey; Pg, Pig; Rb, Rabbit; S, Sheep; Z, Zebrafish; All, all species expected.

➤ 建议抗体使用时的稀释比例如下(实际使用时需根据抗原水平的高低作适当调整):

WB	IP	IF	IHC	ICC	FC	ChIP	ELISA
1-5 µg/ml	-	-	-	-	-	-	0.1-5 µg/ml

➤ 抗体详细信息如下:

About this Antibody	
Name	SARS-CoV-2 N Protein Human Monoclonal Antibody (Clone B2), SARS-CoV-2 N Protein hMAb (Clone B2)
Category	Human Monoclonal Antibody (mAb); Primary Antibody
Isotype	Human/IgG1
Purification method	Protein A
Positive samples	-
Cellular location	-
Customer validation	This antibody can pair with SARS-CoV-2 N Protein Human Monoclonal Antibody (Clone B1) (AF0501) as detection antibody for ELISA.
About the Immunogen	
Immunogen	-
Sequence	-
Gene ID	43740575
Swiss Prot	-
Synonyms	N protein; Nucleocapsid phosphoprotein; Nucleocapsid protein; N structural protein
Category	Anti-infection
Background	SARS-CoV-2 (Severe Acute Respiratory Syndrome Coronavirus 2) also known as 2019-nCoV (2019 Novel Coronavirus) is a virus that causes illnesses ranging from the common cold to severe diseases. SARS-CoV-2 Nucleocapsid Protein is associated with nucleic acid. It is the most abundant protein for coronavirus. Coronaviruses are enveloped viruses with a positive-sense RNA genome and with a nucleocapsid of helical symmetry. Coronavirus nucleoproteins localize to the cytoplasm and the nucleolus, a subnuclear structure, in both virus-infected primary cells and in cells transfected with plasmids that express N protein. Coronavirus N protein is required for coronavirus RNA synthesis and has RNA chaperone activity that may be involved in template switch. Nucleocapsid protein is a most abundant protein of coronavirus. During virion assembly, N protein binds to viral RNA and leads to formation of the helical nucleocapsid. Nucleocapsid protein is a highly immunogenic phosphoprotein also implicated in viral genome replication and in modulating cell signaling pathways. Because of the strong

immunogenicity of coronavirus Nucleocapsid, it is believed that SARS-CoV-2 Nucleocapsid Protein has potential value for the diagnosis of the virus.

➤ 本抗体的相关数据:

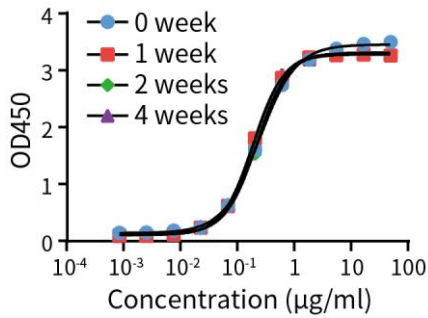


Figure 1. The antibody stability at room temperature was determined by functional ELISA. Immobilized 2019-nCoV Nucleocapsid Protein (新型冠状病毒 N 蛋白) (P2328) at 100ng/well can bind SARS-CoV-2 N Protein Human Monoclonal Antibody (Clone B2). After storing at room-temperature for 1 week, 2 weeks or 4 weeks, the EC50 of this antibody showed no significant change.

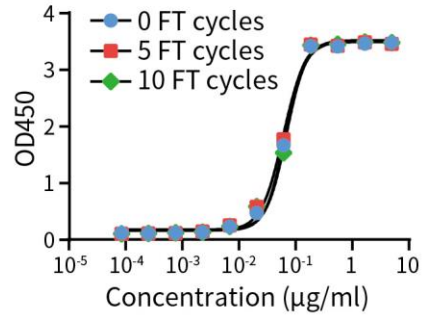


Figure 2. The repeated freeze-thaw (FT) stability of antibody was determined by functional ELISA. Immobilized 2019-nCoV Nucleocapsid Protein (新型冠状病毒 N 蛋白) (P2328) at 100ng/well can bind SARS-CoV-2 N Protein Human Monoclonal Antibody (Clone B2). After 10 freeze-thaw cycles, the EC50 of this antibody showed no significant change.

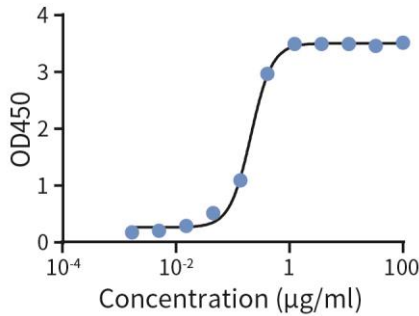


Figure 3. Immobilized 2019-nCoV Nucleocapsid Protein (新型冠状病毒 N 蛋白) (P2328) at 100ng/well can bind SARS-CoV-2 N Protein Human Monoclonal Antibody (Clone B2), and the EC50 is less than 0.21µg/ml.

包装清单:

产品编号	产品名称	包装
AF0503-50µg	SARS-CoV-2 N Protein Human Monoclonal Antibody (Clone B2)	50µg
AF0503-200µg	SARS-CoV-2 N Protein Human Monoclonal Antibody (Clone B2)	200µg
AF0503-1mg	SARS-CoV-2 N Protein Human Monoclonal Antibody (Clone B2)	1mg
—	说明书	1份

保存条件:

SARS-CoV-2 N Protein Human Monoclonal Antibody (Clone B2) 4℃保存, 至少一年有效。短期内不使用, 推荐-20℃保存, -20℃可以保存更长时间。

注意事项:

- 如果本抗体用于Western blot (WB)、免疫荧光(IF)、免疫细胞化学(ICC)等实验, 请注意回收使用过的稀释抗体。回收的抗体通常至少可以重复使用5-10次。稀释后的抗体, 包括已经使用过的稀释抗体, 请4℃保存。
- 回收后重复使用的抗体, 使用方法同新鲜稀释的抗体。如果在重复使用过程中发现抗体出现轻微混浊现象, 可以10,000×g离心1-3分钟, 取上清用于后续检测。如果回收的抗体出现明显的絮状物或长霉长菌等情况, 则可以考虑废弃该抗体。
- 本产品仅限于专业人员的科学研究用, 不得用于临床诊断或治疗, 不得用于食品或药品, 不得存放于普通住宅内。
- 为了您的安全和健康, 请穿实验服并戴一次性手套操作。

使用说明:

请根据抗体的实际用途选择相应的使用方法。

1. Western检测:

- 按照推荐的稀释比例用碧云天提供的Western一抗稀释液稀释抗体。
- 把经过封闭的蛋白膜与稀释好的一抗4℃缓慢摇动过夜或室温缓慢摇动2小时, 确保稀释的抗体至少能在摇动的瞬间覆盖蛋白膜。
- 回收稀释的一抗, 4℃保存以备下次继续使用。
- 按照Western的实验步骤进行后续的洗涤、二抗孵育、洗涤和检测等操作。具体操作可以参考如下网页:
<http://www.beyotime.com/support/western.htm>

2. 免疫染色:

可以使用碧云天生产的免疫染色一抗稀释液(P0103)稀释抗体, 使用后注意回收稀释好的一抗, 具体操作可以参考如下网页:
<http://www.beyotime.com/support/immunol-staining.htm>

3. 其它实验操作请自行参考适当的protocol进行。

相关产品:

产品编号	产品名称	包装
AF0501-50µg	SARS-CoV-2 N Protein Human Monoclonal Antibody (Clone B1)	50 µg
AF0501-200 µg	SARS-CoV-2 N Protein Human Monoclonal Antibody (Clone B1)	200 µg
AF0501-1mg	SARS-CoV-2 N Protein Human Monoclonal Antibody (Clone B1)	1mg
AF0503-50µg	SARS-CoV-2 N Protein Human Monoclonal Antibody (Clone B2)	50 µg
AF0503-200 µg	SARS-CoV-2 N Protein Human Monoclonal Antibody (Clone B2)	200 µg
AF0503-1mg	SARS-CoV-2 N Protein Human Monoclonal Antibody (Clone B2)	1mg
AF0507-50µg	SARS-COV-2 Spike Protein (RBD) Human Monoclonal Antibody (Clone B7)	50 µg
AF0507-200 µg	SARS-COV-2 Spike Protein (RBD) Human Monoclonal Antibody (Clone B7)	200 µg
AF0507-1mg	SARS-COV-2 Spike Protein (RBD) Human Monoclonal Antibody (Clone B7)	1mg
AF0509-50µg	SARS-COV-2 Spike Protein (RBD) Human Monoclonal Antibody (Clone B3)	50 µg
AF0509-200 µg	SARS-COV-2 Spike Protein (RBD) Human Monoclonal Antibody (Clone B3)	200 µg
AF0509-1mg	SARS-COV-2 Spike Protein (RBD) Human Monoclonal Antibody (Clone B3)	1mg
AF0512-50µg	SARS-COV-2 RBD Neutralizing Antibody (Human IgG1)	50 µg
AF0512-200 µg	SARS-COV-2 RBD Neutralizing Antibody (Human IgG1)	200 µg
AF0512-1mg	SARS-COV-2 RBD Neutralizing Antibody (Human IgG1)	1mg
AF0325	SARS-CoV-2 N Protein Polyclonal Antibody	50 µl
AF2335-50µl	Angiotensin Converting Enzyme 2 Rabbit Monoclonal Antibody	50 µl
AF2335-200µl	Angiotensin Converting Enzyme 2 Rabbit Monoclonal Antibody	200 µl

Version 2020.01.21